



Bwrdd Lleol Diogelu Plant
Conwy a Sir Ddinbych
Conwy and Denbighshire
Local Safeguarding Children Board
www.conwy.gov.uk/LSCB

Conwy and Denbighshire Local Safeguarding Children Board

Safeguarding Protocol

A leaflet version of this protocol (suitable for children and young people) is available

Draft Version

Version control

Version	Date	Name	Service	Notes
6.1	8.3.11	Jenny Williams/Leighton Rees.	LSCB	6.1 G Heeney, to incorporate comments from SMG 18 th March 2011
6.2	4.4.11	G Heeney	LSCB	Final amendments following LSCB Board meeting

This protocol is available on our web pages www.conwy.gov.uk/lscb

This document can be provided on CD, electronically or in large-print and can be translated into other languages.

For more information contact:

Gabrielle Heeney
Business Manager
Conwy & Denbighshire LSCB
gabrielle.heeney@denbighshire.gov.uk
Tel: 01824 712833

Approved by Local Safeguarding Children Board:
To be reviewed: March 2012

Contents

1.	Introduction	4
2.	Principles	4
3.	Why we have a protocol	5
4.	How we will deliver the Conwy Safeguarding Protocol	6
5.	Annexe 1 - SAIT standards for the delivery of Safeguarding within Conwy and Denbighshire	7
6.	Annexe 2 - LSCB Structure/Information flow	9
7.	Annexe 3 – Statutory partnerships held to account by the LSCB	10
8.	Annexe 4 - LSCB 11/12 Priorities	11

1. Introduction

This protocol is fully supported by the agencies and organisations which make up Conwy and Denbighshire Local Safeguarding Children Board

This protocol sets out how Conwy and Denbighshire Local Safeguarding Children Board will ensure that the interests of the child are paramount in all consideration of welfare and safeguarding. Safeguarding Children is everyone's responsibility.

This protocol refers to children and young people in Conwy and Denbighshire.

The statutory definition of safeguarding and promoting welfare

- Protecting children from maltreatment
- Preventing impairment of children's health or development
- Ensuring that children are growing up in circumstances consistent with the provision of safe and effective care
- Undertaking that role so as to enable those children to have optimum life chances and enter adulthood successfully

2. Principles

Bilingual Provision – Through the implementation of the safeguarding protocol there is a commitment to the development of provision which allows a choice to use English or Welsh. This refers to the development of provision, information and training relating to the objectives within this document.

Accessibility – Through the implementation of the safeguarding protocol objectives, there is a commitment to ensuring that provision, information and training is easily accessible and takes consideration of a range of different needs.

Children's Rights and Participation - The Safeguarding protocol is built on all of the articles under the "protection" theme in the United Nations Convention on the Rights of the Child. The protocol also acknowledges the importance of listening to children and young people's views in order to safeguard them effectively - the National Participation Standards provide a sound basis for this.

Listening to families - In order for services to be relevant and focused on appropriate change it is recognised that families need to make a significant contribution to the shaping of effectiveness by active participation in the development of interventions.

3. Why we have a Protocol

Improved outcomes for children can only be delivered and sustained when key people and bodies work together to design and deliver more integrated services around the needs of children and young people. That change needs to be led and managed at local level and supported nationally.

This will require improved joint working between the Welsh Assembly Government and its partners, and between those partners and children, young people and their families and communities. The aim is to move to a position, both locally and nationally, where:

- The well-being of children and young people is at the heart of the Welsh Assembly Government's protocol for children and their families as set out in *Children and Young People: Rights to Action (2004)*, which aims to make sure that all key people and bodies are working in partnership to achieve shared outcomes;
- Clear overall accountability exists for services;
- Key local services are integrated, where appropriate, around the needs of children and young people, and children and young people are actively involved in developing and evaluating the services that are provided for them;
- Key people and bodies work well individually and together through universal, targeted and specialist services to safeguard and promote the welfare of children; and
- Children, young people and their families receive effective support at the first sign of difficulties.

National and local context

The LSCB has links with, and holds to account, the range of statutory partnerships in Denbighshire and Conwy that contribute to the delivery of Core Aim 3 of the Welsh Assembly's Seven Core Aims. The seven core aims for children and young people summarise the UN Convention on the Rights of the Child (UNCRC) and form the basis for decisions on priorities and objectives nationally. They should also form the basis for decisions on strategy and service provision locally. Core Aim 3 is:

“Children and young people enjoy the best possible physical and mental, social and emotional health, including freedom from abuse, victimisation and exploitation”

The statutory partnerships that are held to account by the LSCB are listed in Annex 3. Within this Core Aim, the LSCB particularly wants to focus on:

- Responsive safeguarding - Identifying and protecting children at risk (suffering or likely to suffer harm) i.e. direct or serious physical, emotional and sexual abuse, neglect and exploitation: responding when children and young people have been harmed.
- Targeted safeguarding - Identifying and supporting children who, for one reason or another, are vulnerable to poor outcomes and life circumstances: safeguarding vulnerable children and young people.

4. How we will deliver the Conwy & Denbighshire Safeguarding Protocol

The Conwy and Denbighshire LSCB Annual Business plan will support the delivery of this protocol, and will be reviewed and updated on an annual basis utilising the SAIT standards as detailed below.

The LSCB itself will focus on delivering its own operating standards. In relation to the strategic priorities set the LSCB will hold partners and partnerships to account in ensuring the strategic direction is clearly implemented within their strategic planning. This will be undertaken by a process of reports from partners and partnerships to the LSCB on an annual basis.

The LSCB, through its sub group arrangements, will work with partner agencies to ensure appropriate delivery of the LSCB priority areas. This will be achieved, for example, by ensuring common membership, and by ensuring that the LSCB has designated link members represented on the statutory partnerships. Designated link members responsibilities will be included in LSCB Board Member Job descriptions.

In addition to addressing the responsive and targeted safeguarding issues the LSCB would also seek partners and partnerships to keep it informed of how they are addressing the broader safeguarding agenda.

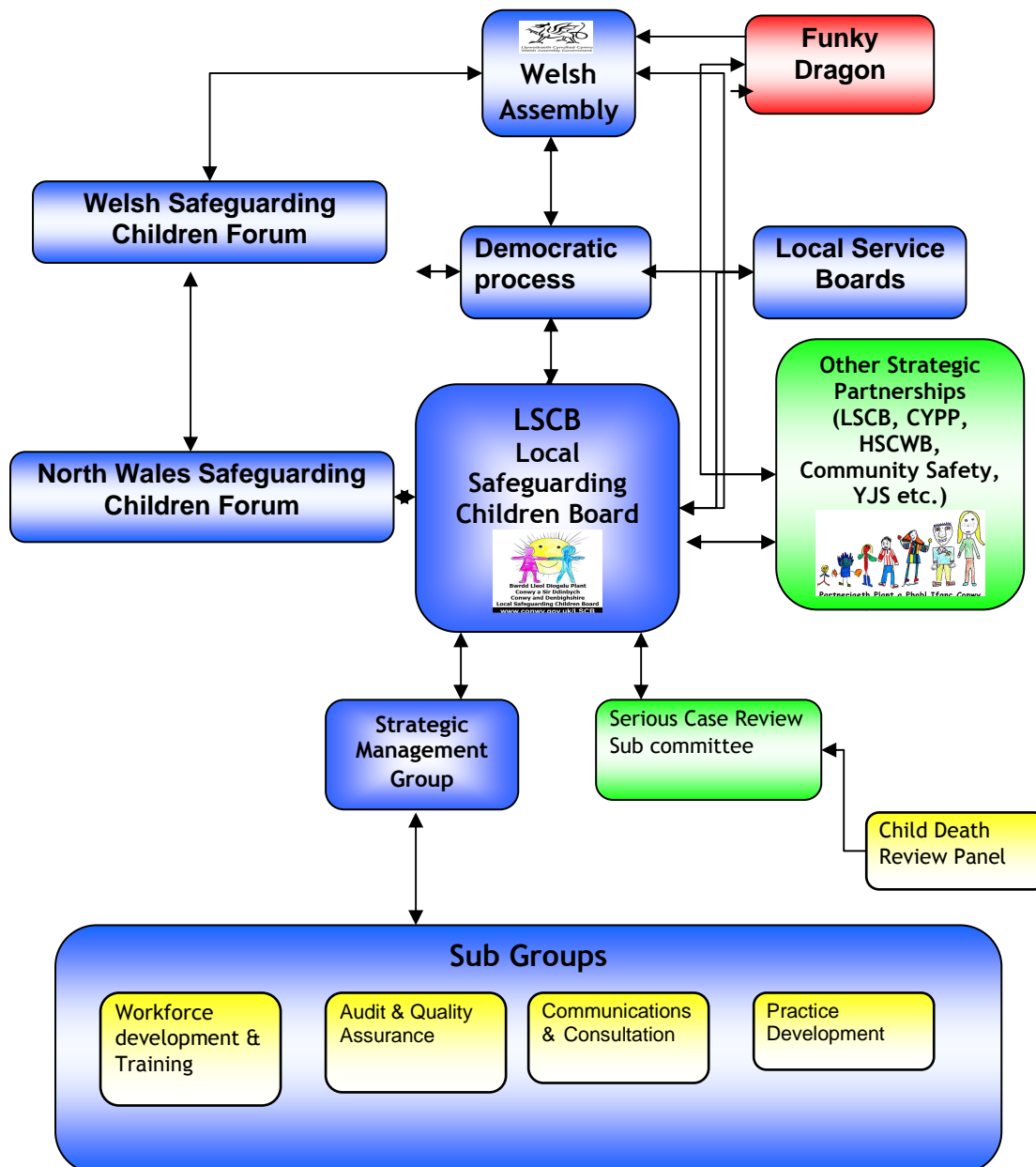
The LSCB will ensure that partners and statutory partnerships are kept aware through a range of communication channels of key messages from practice that should inform both their operating and strategic direction.

Annexe 1 - The Delivery of Safeguarding within Conwy and Denbighshire will be delivered through the following SAIT standards.

ESTABLISHING THE BOARD'S STRATEGIC DIRECTION
Standard 1 The Board has a clear and shared understanding about which elements of safeguarding it is accountable for and for which it is holding others to account
Standard 2 The LSCB has specific objectives which aim to improve the quality of safety for specific groups of children
ESTABLISHING EFFECTIVE GOVERNANCE
Standard 3 The members have negotiated the terms of reference for the LSCB
Standard 4 The independent identity of the LSCB as a statutory body is recognised
Standard 5 The membership of the LSCB is compliant with <i>Working Together</i> Sections 4.1-4.12
Standard 6 The LSCB specifies the responsibilities, knowledge requirements and accountabilities of individual members who sit on the Board
Standard 7 The Board holds member agencies to account with regard to safeguarding activity
Standard 8 The LSCB has a business planning, review and improvement system linked to achieving its specific objectives and improving the cooperation and effectiveness of the Board
Standard 9 The LSCB has developed systems for ensuring governance of multi-disciplinary practice
Standard 10 The LSCB has developed systems to ensure safe recruitment in all member agencies
Standard 11 The LSCB has a robust process for reviewing and learning from serious case reviews (SCRs) which leads to improvements
BUILDING CAPACITY
Standard 12 LSCB members are clear about the roles, responsibilities and reporting arrangements of the chair
Standard 13 The Board has effective sub-groups to deliver its work plan
Standard 14 The Board has identified both its required resources in light of the work programme and dedicated staffing requirements and negotiated a funding mechanism
DELIVERING OUTPUTS
Standard 15 The Board actively consults with both children, young people and parents/carers in the development and review of its work
Standard 16 The LSCB has an active multi-agency training and development programme that meets the requirements of <i>Working Together</i>
Standard 17 The Board is active in informing all members of the community of the role they can play to make their community safer
Standard 18 The LSCB actively promotes feedback to and from frontline staff about safeguarding policy and practice
Standard 19 The LSCB knows about the quality of practice and actively works to improve this
IMPROVING SAFEGUARDING OUTCOMES FOR CHILDREN
Standard 20 The LSCB can demonstrate improvements to the outcomes for children receiving <i>child protection</i> services
Standard 21 The LSCB can show how its own work and work with other partnerships is improving safety for <i>all</i> children

Annexe 2 - LSCB Structure/Information flow.

Local Safeguarding Children's Board Structure/Information Flow Diagram



Annexe 3 – Statutory Partnerships held to account for their safeguarding activities by the LSCB

Children and Young People’s Partnership

Community Safety Partnership

Youth Justice Service

Health Social Care and Wellbeing Partnership

Local Service Board

Annexe 4 - LSCB 11/12 Priorities

Priorities 2011-12

1. Through early intervention, to prevent families where the parents/carers have drug & alcohol, mental health or domestic violence problems escalating from safeguarding concerns to child protection issues.
2. To ensure that the results of mapping work on vulnerable families are shared with partners; and to also ensure that the services that are planned in response to those results are shaped from a safeguarding perspective.
3. Through early intervention, to prevent children exhibiting inappropriate sexualised behaviour becoming perpetrators of sexual offences.
4. To ensure that the direction, work and review of the LSCB is informed by consultation and participation with children, young people, their parents and carers.